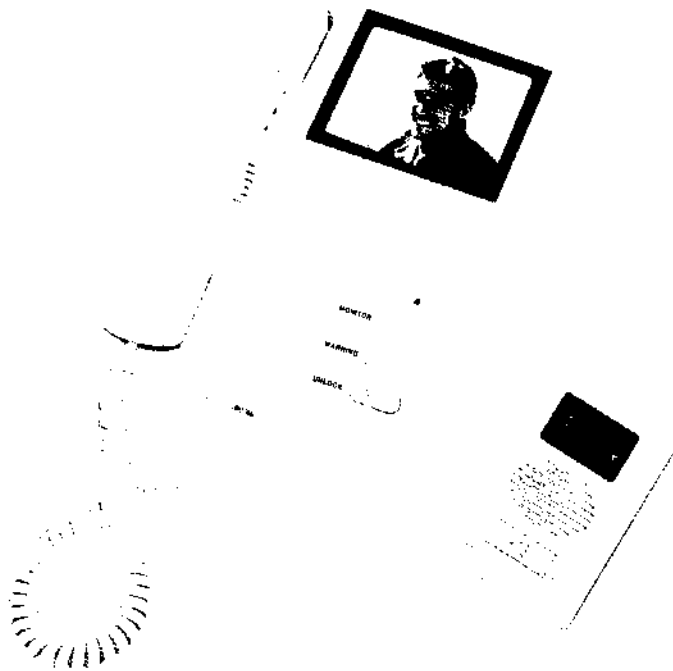


VIDEO DOOR-PHONE



INSTRUCTION MANUAL

Introduction

The video door-phone is the latest designed multi-function, mountable system, with extremely thin case. It adopts close circuit monitor technology, with outdoor photograph, indoor display, 2-way talk, and unlock key. It helps you watch what is in front of the outdoor, with ultra-red auxiliary light. This system is well shaped, with clear picture, reliable, and easy to install. which makes you much safer, and prevents you from theft and robbery. It's the most ideal and necessary device for a modern family.

Please read the operation manual before you use this device.

We are sure that it can make you not worry about the family security, and you'll be leading a better life with it.

I. Description of parts:

(一) Outdoor unit (ref.to figure 1)

Front:

- 1、Photograph lens
- 2、Night vision light
- 3、Speaker
- 4、Door bell button
- 5、Microphone

Back:

- 1、IR--+12
- 2、2W----grounding
- 3、3Y----audio signal terminal
- 4、4B----video signal terminal
- 5、REC----alarm

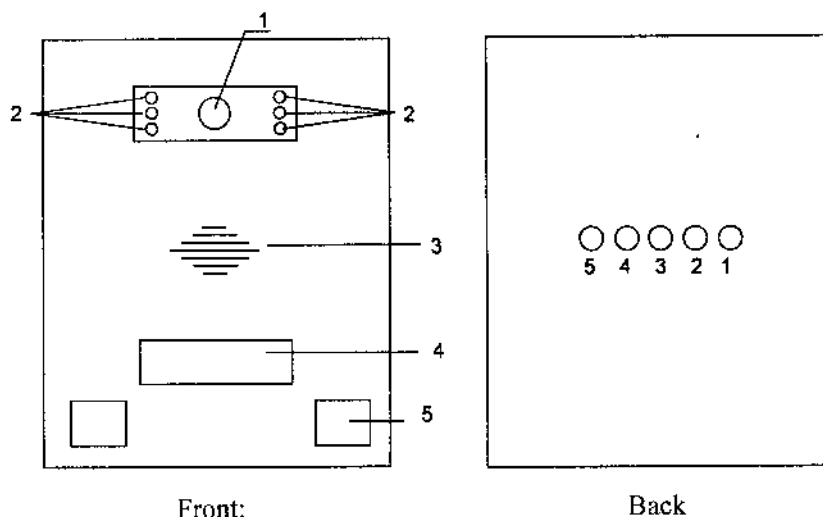


Figure 1

2

(B) Indoor unit:

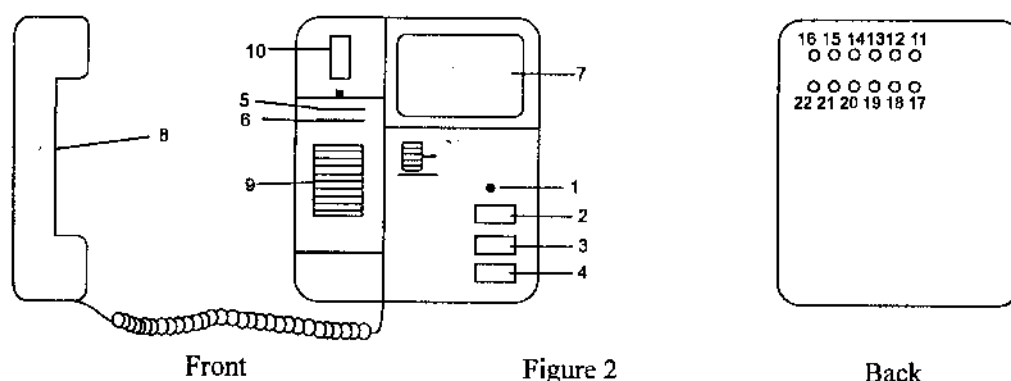


Figure 2

- | | |
|-------------------------------|----------------------------------|
| 1、Power indicator | 2、Monitor button |
| 3、Alarm button | 4、Unlock button |
| 5、Contrast adjustment | 6、Volume adjustmont |
| 7、Screen | 8、Receiver |
| 9、Speaker | 10、Microphone |
| 11、IR----+12V terminals | 12、2W-----grounding |
| 13、3Y---audio signal terminal | 14、4B---Video signal terminals |
| 15、16.KEY---Unlock terminal | 17、19。 20。 21。 22。 — Reservation |
| 18、Alarm terminal | |

3

II. Operation:

A. Operation for outdoor unit:

- 1、The bell inside room will be ringing while visitor presses the button.
- 2、Talk with the people outside after taking up the receiver.
- 3、Picture of the visitor will be displayed clearly at night even without light source as the unit itself has infra-red Light.
- 4、This system is compatible with our different multi-alarm units, such as fire alarm, smog alarm, infra-red detection, etc.

B. Operation for indoor unit.

- 1、Calling from outside unit:
 - A、The inside unit will ring and display the picture of the visitor.
 - B、You could take up the receiver and talk with the people outside and open of the door by pressing the unlock button.
 - C、If you would not like to open the door for the visitor, you are still able to watch him without being observed.
- 2、The receiver is taken up, the picture will be displayed, and the picture will be displayed before the receiver is hung up.
When the receiver is hung up the unit will be ready to work automatically.
- 3、If the receiver is not hung up in 60 seconds, the indoor system will automatically shift to the stand by state
- 4、The indoor unit will automatically monitor the outside situation when monitor button is pressed.
- 5、The "volume" of the bell and the "contrast" of the picture are adjustable.
- 6、Pressing " unlock " button will be unlocked.

4

III. Installation

A. Outdoor unit installation

- 1、Install the metal mounting plate on the wall 1400mm high above ground.
- 2、Hang on the outdoor unit on the mounting plate, and connect all the terminals accordingly, as shown by Fig.3:
fit A to (3) and fit B to (2), then the system is ready to work.

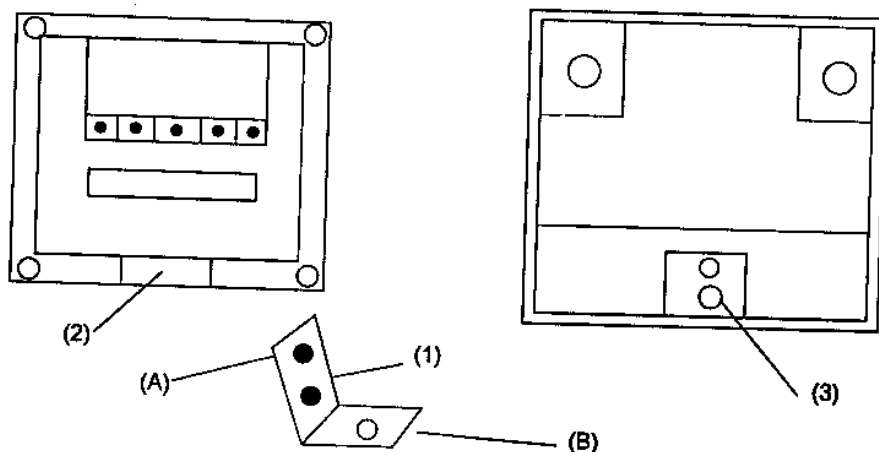


Figure 3

5

B、Indoor unit installation (see figure 4)

Install the plastic expansion screw into the wall 1500-1700mm high above the ground, and connect the line.

- 1、indoor unit support
- 2、plastic expansion screw
- 3、Cap screw
- 4、Holes for mounting

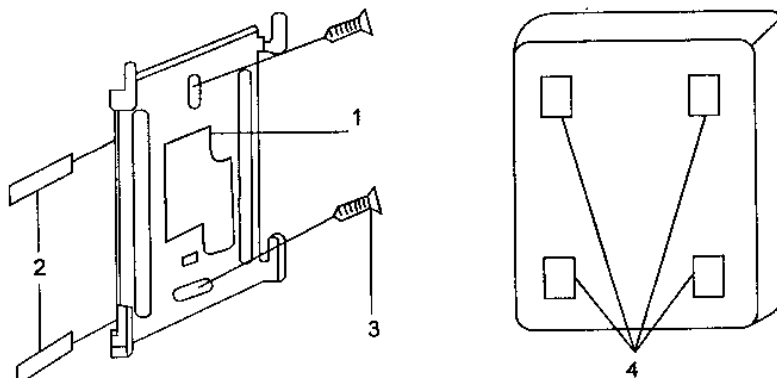


Figure 4

Installation for one outdoor unit connected with more indoor units(see figure 5)

The terminals of each indoor unit are marked with numbers (1), (2), (3), (4), (5) etc, and link them accordingly by parallel connection.

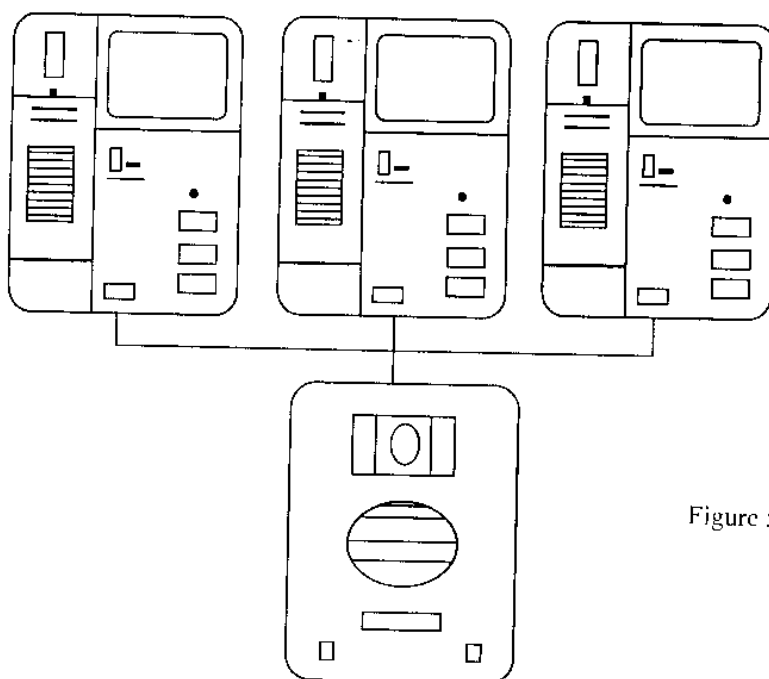


Figure 5

IV. Description for indoor unit terminals

[1] 1R----+12V

[2] 2W----grounding

[3] 3Y----audio frequency transmission & touch

[4] 4B-----video signal

[5] KEY---unlock

[6] AUX---alarm line

Description for outdoor unit terminals

1R. 2W. 3Y. 4B. (same as indoor unit), 5REC-----alarm line.